

<b>Subject:</b>  TIRE VIBRATION CONCERNS	<b>Bulletin No:</b> 02-001/03
	<b>Last Issued:</b> 2/24/2003

## APPLICABLE MODEL(S)/VINS

2000-2003 All Mazda Vehicles.

## DESCRIPTION

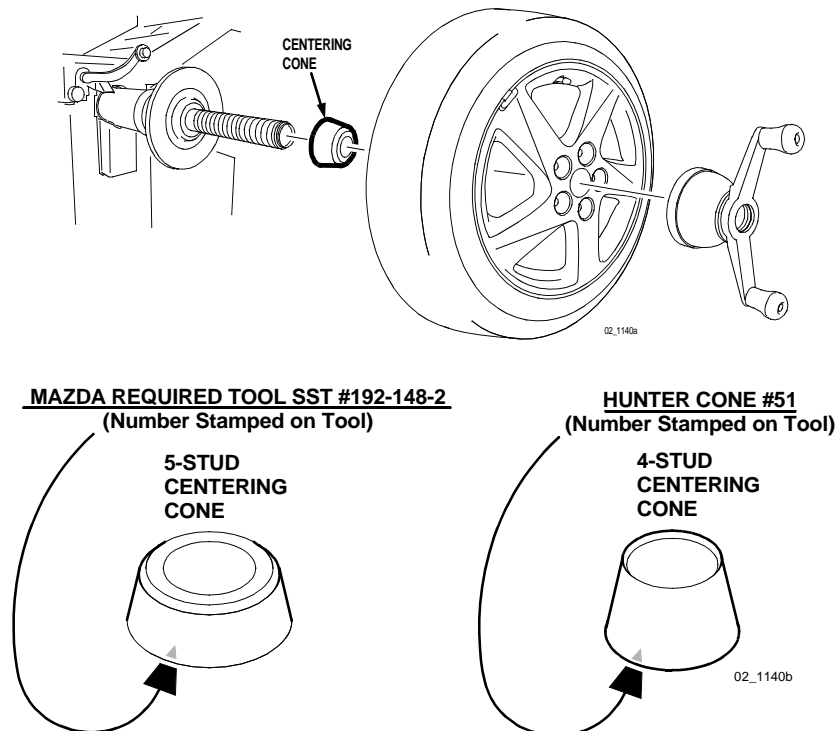
If a vehicle has body vibration or steering wheel shimmy while driving, and the root cause is determined to be tire balance, re-balance the tires using a Hunter GSP 9700 balance machine. When using the Hunter GSP 9700, be sure to use the following centering cones and cone/wheel set up listed below. Using the appropriate centering cone ensures that the wheel will be properly centered to the centering cone.

To find the location of a GSP 9700 near your dealer, visit Hunter's web site at [www.gsp9700.com](http://www.gsp9700.com) and click on 'Find a GSP9700 Near You'.

## REPAIR PROCEDURE

1. Select the appropriate centering cone and use the following setup:
  - 4-stud wheels - use Hunter Cone #51
  - 5-stud wheels - use Mazda Required Tool SST #192-148-2

**NOTE:** Wheel balance cones have an ID (inside diameter) of 40mm which will fit most tire balancers.



**CONSUMER NOTICE:** The information and instructions in this bulletin are intended for use by skilled technicians. Mazda technicians utilize the proper tools/equipment and take training to correctly and safely maintain Mazda vehicles. These instructions should not be performed by "do-it-yourselfers." Customers should not assume this bulletin applies to their vehicle or that their vehicle will develop the described concern. To determine if the information applies, customers should contact their nearest authorized Mazda dealership.